

Thermal Module



LWIR

MWIR



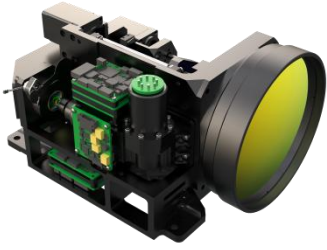


LWIR Module

Model	Optical	IR core	FOV
TM5P8A	5.8mm, f1.0, Athermalized	VOx, 640×512, 12μm	67°×55.8°
TM13A	13mm, f1.0, Athermalized	VOx, 1280×1024, 12μm	61.1°×50.6°
TM19A	19mm, f1.0, Athermalized	VOx, 640×512, 12μm	22.8°×18.4°
TM19AH		VOx, 1280×1024, 12μm	44°×35.8°
TM35A	35mm, f1.0, Athermalized	VOx, 640×512, 12μm	12.5°×10°
TM35AH		VOx, 1280×1024, 12μm	24.8°×19.9°
TM75E	75mm, f1.0, Motorized	VOx, 640×512, 12μm	5.8°×4.7°
TM100E	100mm, f1.2, Motorized	VOx, 640×512, 12μm	4.4°×3.5°
TM150E	150mm, f1.2, Motorized	VOx, 640×512, 12μm	2.9°×2.3°
TM25/75	25~75mm, 1.2	VOx, 640×512, 12μm	5.9°×4.7°~17.5°×14°
TM25/75H		VOx, 1280×1024, 12μm	11.7°×9.4°~17.5°×14°
TM20/100	20~100mm, f1.2	VOx, 640×512, 12μm	4.4°×3.5°~21.7°×17.5°
TM20/100H		VOx, 1280×1024, 12μm	8.8°×7°~42°×34°
TM25/150	25~150mm, 1.4	VOx, 640×512, 12μm	2.9°×2.4°~17.5°×14°
TM30/150	30~150mm, 1.2	VOx, 640×512, 12μm	2.9°×2.4°~14.6°×11.7°
TM30/150H		VOx, 1280×1024, 12μm	5.9°×4.7°~28.7°×23.1°
TM30/180	30~180mm, f1.4	VOx, 640×512, 12μm	2.4°×2°~14.6°×11.7°
TM25/225	25~225mm, f1.2~1.5	VOx, 640×512, 12μm	1.9°×1.5°~17.5°×14°
TM25/225H		VOx, 1280×1024, 12μm	3.9°×3.1°~42°×34.1°

Feature

- Power Supply: 12VDC (3~18VDC)
- NETD: <40mk for standard, <30mk for optional
- Output (640x512): Analog(PAL), USB, LVDS, LVCOMS, Ethernet(h264), BT656, BT1120, Cameralink
- Output(1280x1024): LVDS, LVCOMS, Ethernet(h264), BT1120, Cameralink, HDMI, SDI
- Other Function: Auto focus, Sunshine protection, High voltage protection
- Protection level: IP67 (Front panel)



MWIR Module

Model	Optical	Cooled Detector	FOV
CMW15/300 CMW15/300P	15~300mm, f4	MCT/, 640×512, 15μm, MTTF 6500h InSb/, 640×512, 15μm, MTTF10000h	1.83°×1.46°~35.5°×28.7°
CMW40/600 CMW40/600P	40~600mm, f4	MCT/, 640×512, 15μm, MTTF 6500h InSb/, 640×512, 15μm, MTTF10000h	0.91°×0.73°~13.7°×10.9°
CMW40/800 CMW40/800P	40~800mm, f4	MCT/, 640×512, 15μm, MTTF 6500h InSb/, 640×512, 15μm, MTTF10000h	0.68°×0.55°~13.7°×10.9°
CMW40/1100 CMW40/1100P	40~1100mm, f5.5	MCT/, 640×512, 15μm, MTTF 6500h InSb/, 640×512, 15μm, MTTF10000h	0.5°×0.4°~13.7°×10.9°

Video board	Analog Video Output	Digital Video Output	Protocol
002	PAL, NTSC, CCIR, CVBS	Cameralink	RS422
003	PAL, NTSC, CCIR, CVBS	SDI	RS422
004	PAL, NTSC, CCIR, CVBS	Ethernet (H.264)	RS422
005	PAL, NTSC, CCIR, CVBS	GigE	RS422/ GenICam



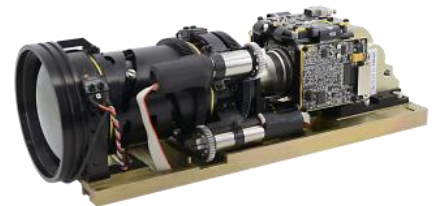
Cooled Lens



Cooled Detector



Video Board



Cooled module

Feature

- Power Supply: 24VDC (18~32VDC)
- Fast Auto Focus
- Automatic Bad Pixel Correction
- Various Video Output for Optional
- Custom Configuration